



4 Charles Clowes Walk, London
SW11

GARTONJONES.COM

4 Charles Clowes Walk, London
, SW11

GARTON JONES.COM

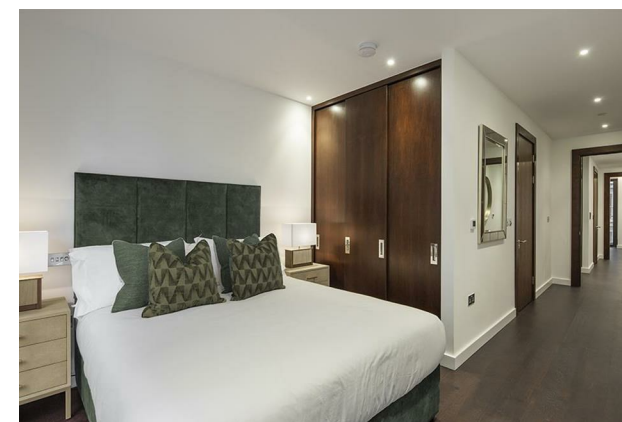
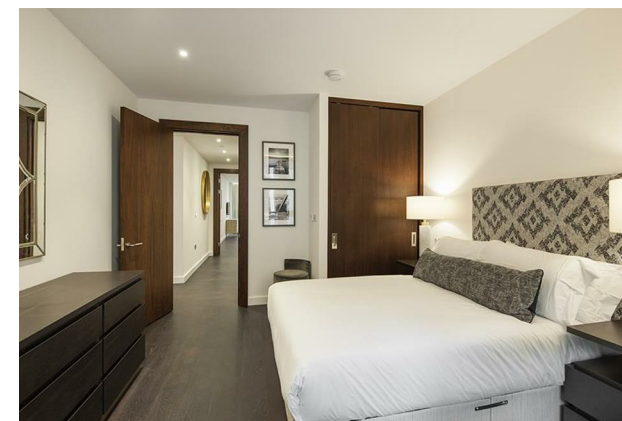
9 Albert
Embankment
London
SE1 7SP

Lettings:
+44 (0) 20 7735 1888
nineelms@gartonjones.com
www.gartonjones.com

£1,119 Per Week

A spacious 2 double bedroom, 2-bathroom apartment of approx.864sq.ft (80.26sq.m) located in Thornes House, part of The Residence Collection in Nine Elms. This elegant apartment is on the 6th floor of this new development which for the residents' private use features a 24-hour concierge, gym, media room, board room and dedicated building manager. Ideally located within close walking distance to the extensive transport links at Vauxhall Station, amenities such as the Black Cab Coffee Co as well as a Waitrose convenience store a located nearby and you are also close to a host of other local shops and restaurants.

- 2 Bedrooms
- 864sq.ft (80 sq.m)
- 2 Bathrooms (1 En-Suite)
- Open Plan Reception Room
- Smart Integrated Kitchen
- Balcony
- Underfloor Heating
- 24 Hour Concierge
- Residents Gym
- 0.3 Miles from Nine Elms Tube Station





SIXTH FLOOR

APPROX. GROSS INTERNAL AREA *
Apartment - 864 Ft² - 80.24 M²
Balcony - 51 Ft² - 4.74 M²

Property Details:
APARTMENT 31
THORNES HOUSE
4 CHARLES CLOWES WALK
LONDON
SW11 7AG

Plans Drawn: 29.01.2019

Surveyed and Drawn By:
BKR
Hideaway Work Space
1 Empire Mews
London
SW16 2BF

Tel: 0145 257 2023
info@bkrfloorplans.co.uk
www.bkrfloorplans.co.uk
© BKR 2019

